

Breast Carcinoma Through The Lens of FDG PET CT : A Pictorial Review

Mariyam Waseem, Ahmad Qureshy
Nuclear Medicine Department, Shaukat Khanum Memorial Trust

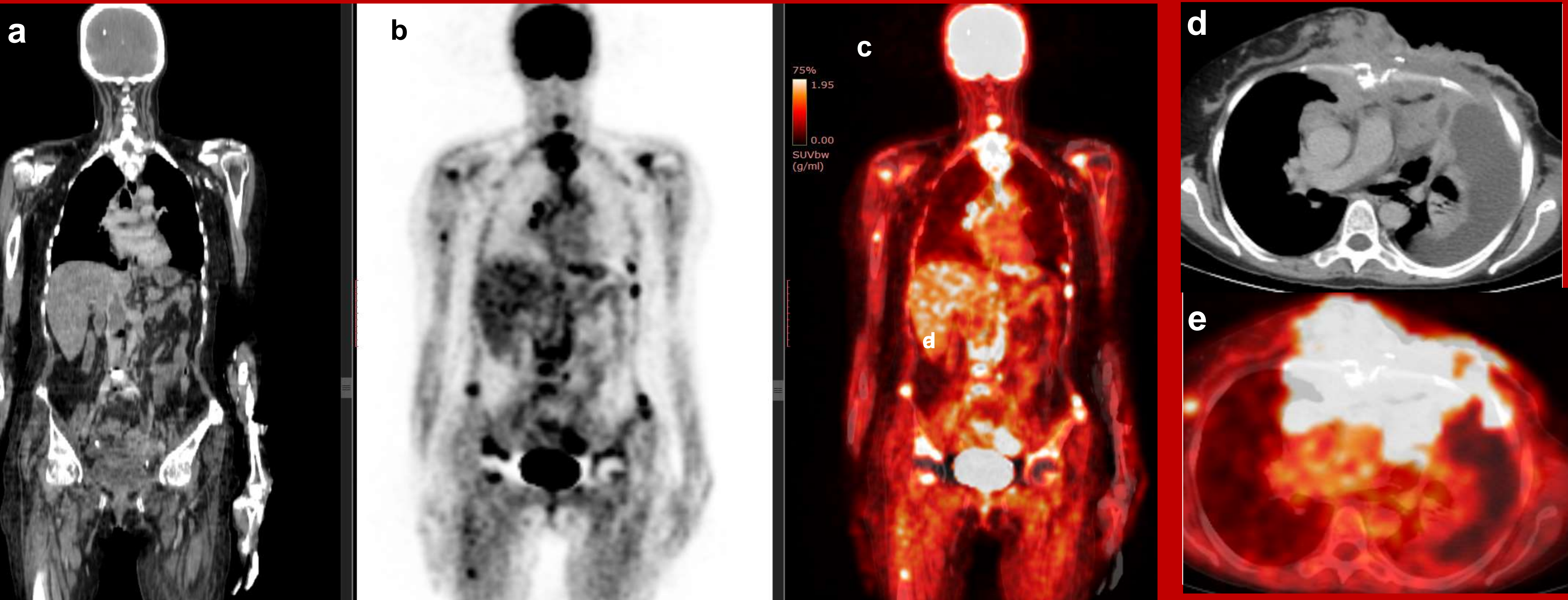
INTRODUCTION

FDG PET CT plays a vital role in staging and response assessment of breast carcinoma. We reviewed FDG PET CT scans of breast cancer patients from 2023 to 2025. Here we present a few eye catching cases highlighting how the same disease can have multiple uptake patterns on FDG PET CT.

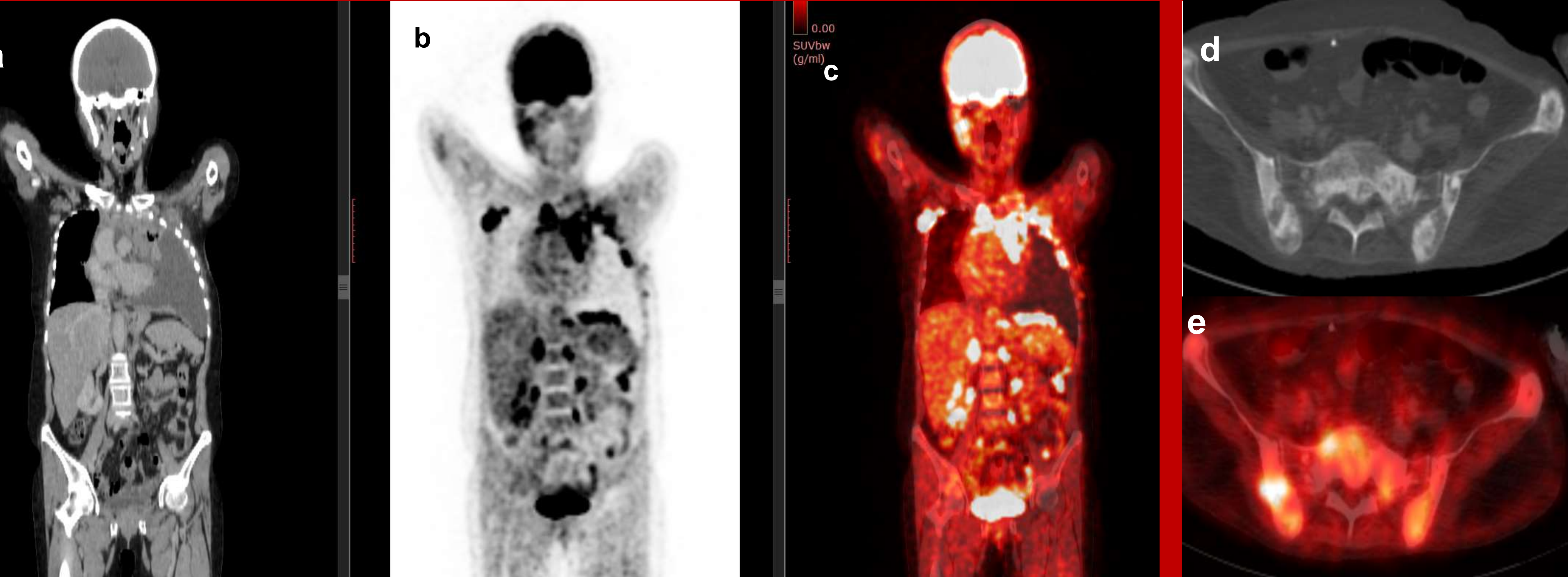
CASES



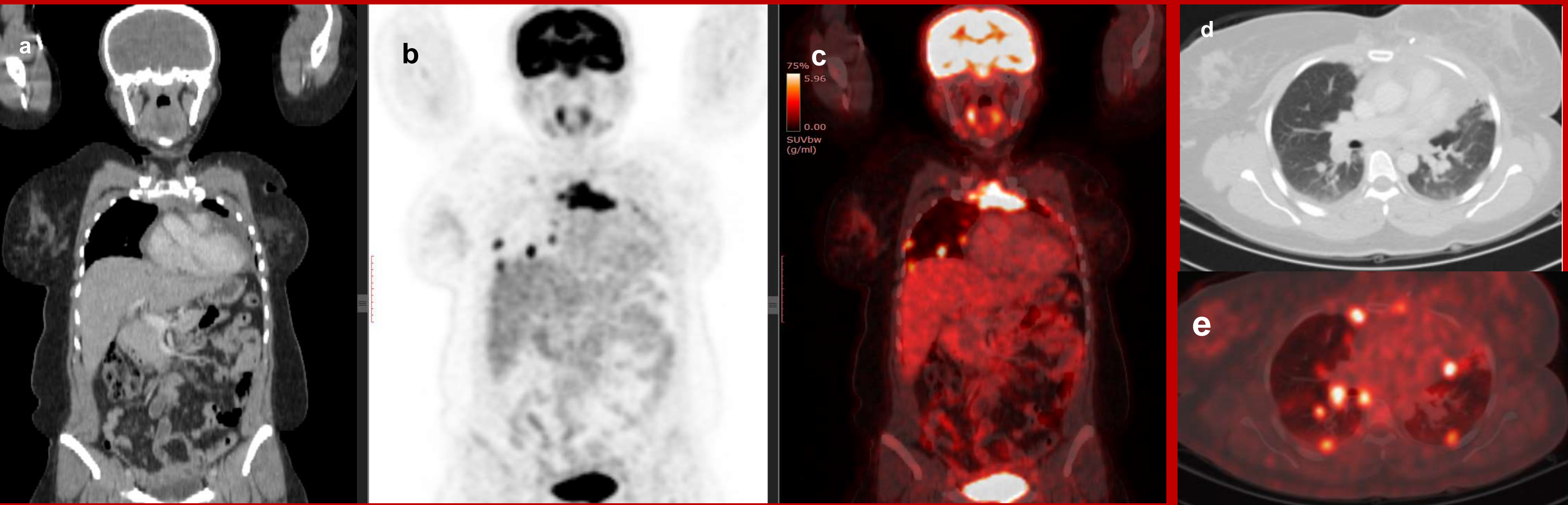
33, F. Left breast invasive ductal carcinoma, grade 3. CT (a), PET(b), fused (c), axial CT(d), axial fused (e). FDG PET CT shows uptake in the primary left breast mass and in multiple mediastinal lymph nodes



42, F. Metastatic neuroendocrine tumor of left breast. CT (a), PET(b), fused (c), axial CT(d), axial fused (e). PET CT showed avid left breast mass invading the chest wall with left pleural and nodal disease



43, F. Metastatic breast carcinoma CT (a), PET(b), fused (c), axial CT(d), axial fused (e). FDG PET CT showed avid mediastinal nodal and multiple osseous metastatic deposits.



44, F. Left breast invasive ductal carcinoma. CT (a), PET(b), fused (c), axial CT(d), axial fused (e). FDG PET CT shows avid ant. Mediastinal mass with bilateral lung nodules.

